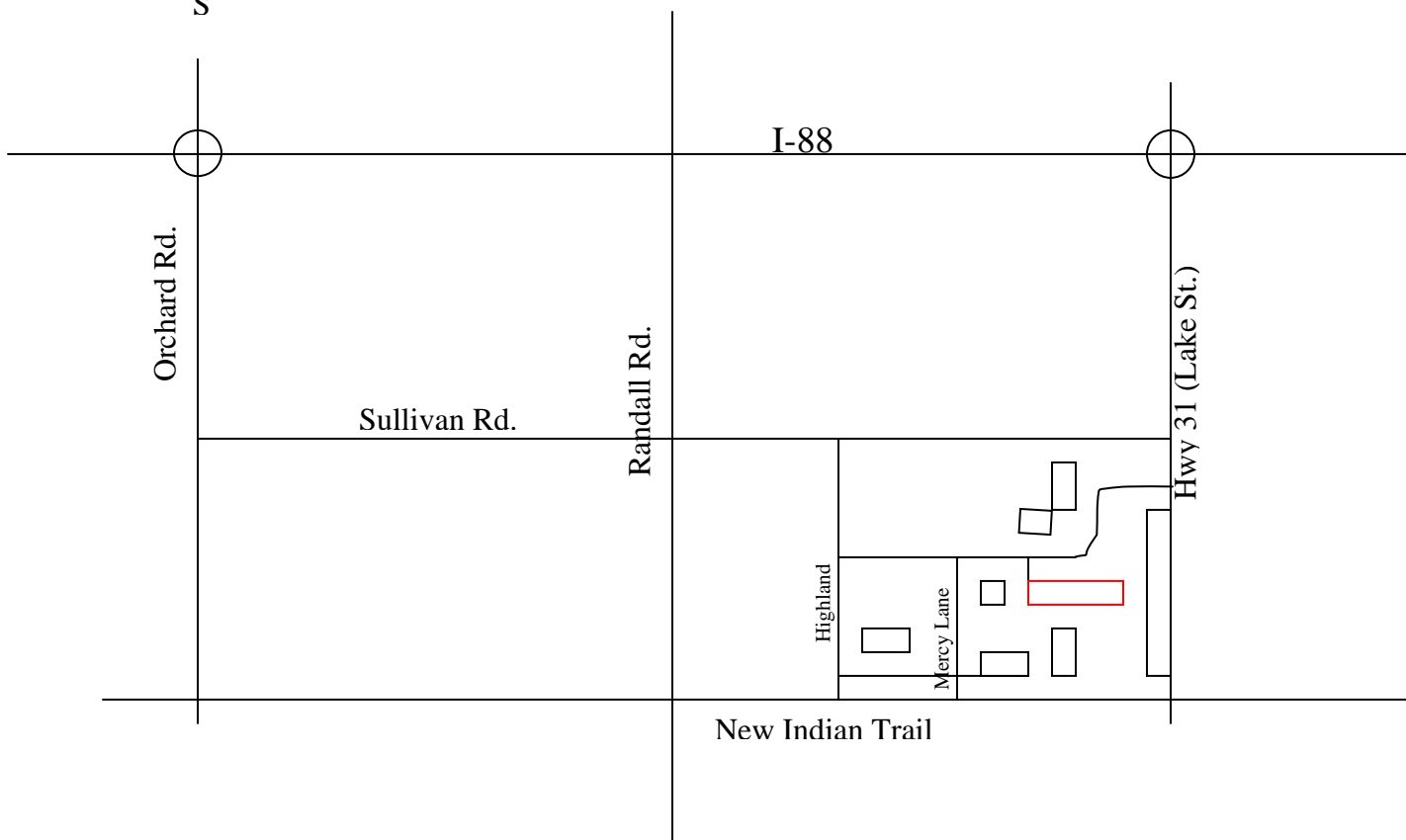
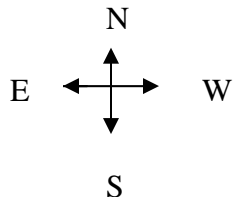


Directions to Mental Health & Mental Retardation Services, Inc.:

The easiest way to get here from any direction is to first get to I-88. Coming from either the East or the West, take the exit for Highway 31 (Lake St.). Turn South onto Lake Street. Go to the 4th traffic light, which is at New Indian Trail Road. Turn Right (West) onto New Indian Trail. Go West approximately 1/2 mile, to Mercy Lane. Turn Right onto Mercy Lane. It looks like you are going straight to the front doors of Provena Mercy Hospital. At the stop sign, turn right again. You will go past the dialysis center on the right. MH & MR Services is the next building on the right. Enter at the West entrance (the first you come to). It has our name in large letters above the door. See picture. If you have any problems, give us a call. (630) 892-5456.



Mental Health & Mental Retardation Services,
Inc.

P.O. Box 935
400 Mercy Lane
Aurora, IL 60507

Phone: 630-892-5456

Fax: 630-892-5480